

# 8. DAMP PROOFING

## 8.1 GEOMEMBRANE (DPM)



- APPLICATIONS**
- LANDSCAPE PROJECTS
  - DOMESTIC GARBAGE LANDFILL
  - WATER CONSERVANCY PROJECTS
  - AQUACULTURE
  - ROOF RESEVOIR
  - ROOF GARDEN

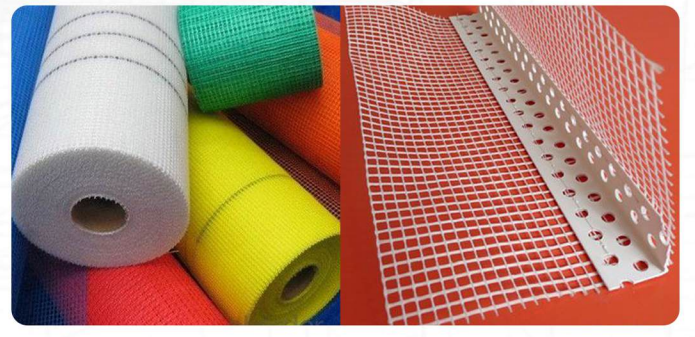
## 8.2 DAMP PROOF COURSE (DPC)



- APPLICATIONS**
- PREVENTION OF RISING DAMP IN WALLS
  - WATERPROOFING OF BASEMENTS AND CELLARS
  - MOISTURE BARRIER IN CONCRETE STRUCTURES
  - PROTECTION OF INTERNAL WALLS FROM MOISTURE
  - SAFEGUARDING FOUNDATION AND FLOOR JUNCTIONS

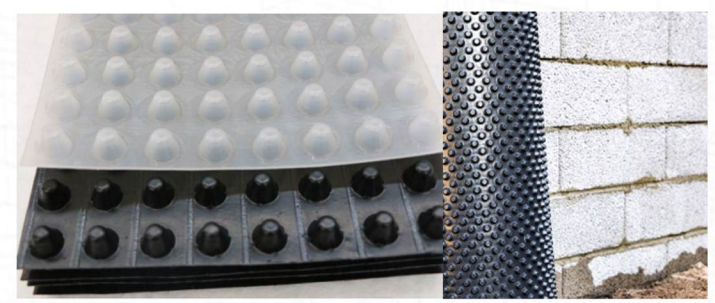


# 9. FIBERGLASS REINFORCEMENT MESH



- APPLICATIONS**
- REINFORCING WALLS
  - NATURAL MARBLE REINFORCEMENT
  - EXTERIOR INSULATION FINISHING SYSTEM

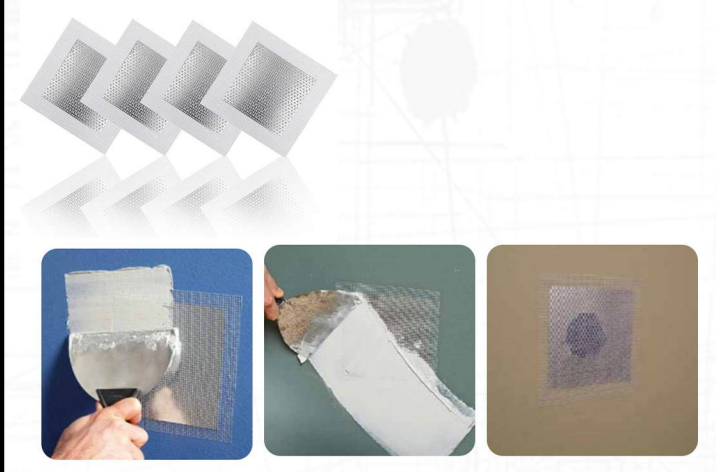
# 10. DIMPLE SHEET



- APPLICATIONS**
- GREEN ROOF DRAINAGE LAYERS
  - UNDER-SLAB DRAINAGE SYSTEMS
  - DRAINAGE FOR RETAINING WALLS
  - FOUNDATION WALL WATERPROOFING
  - PROTECTION OF WATERPROOFING MEMBRANES
  - LANDSCAPE AND GARDEN DRAINAGE SOLUTIONS
  - BASEMENT AND CRAWL SPACE MOISTURE CONTROL



# 11. WALL PATCH



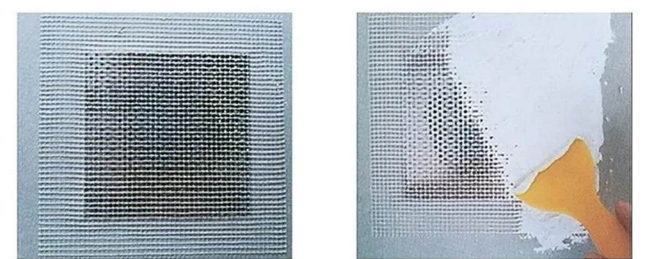
- APPLICATIONS**
- GIVES YOU A NEW DRYWALL
  - HOME RENOVATION PROJECT
  - SUITABLE FOR WALL AND CEILINGS
  - PLUMBING REPAIR EXPOSURE

## USAGE METHOD



1. Lightly sand around hole and wipe clean

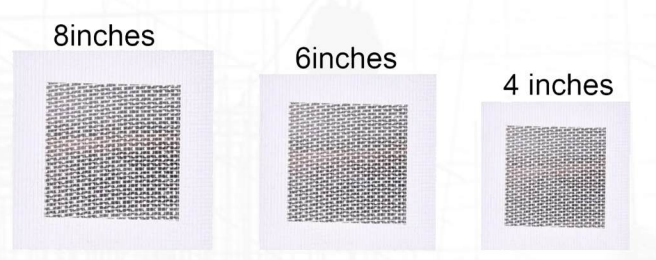
2. Tear off the sticker



3. Apply patching compound to metal side of wall patch and press firmly over hole

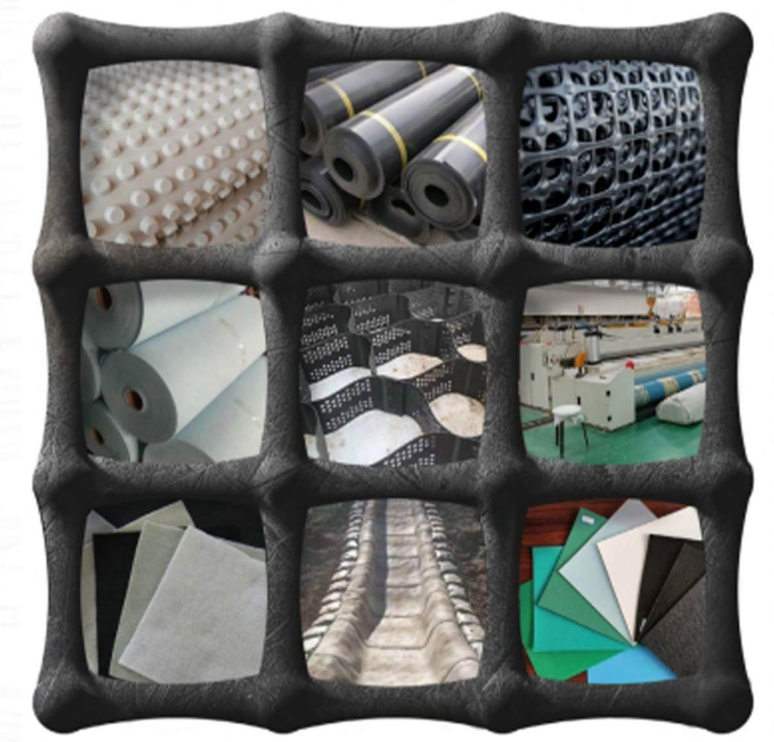
4. Cover entire patch with compound feather edges until bled to your satisfaction

## AVAILABLE SIZES



# GEONOR

Geo Engineering & Waterproofing Materials

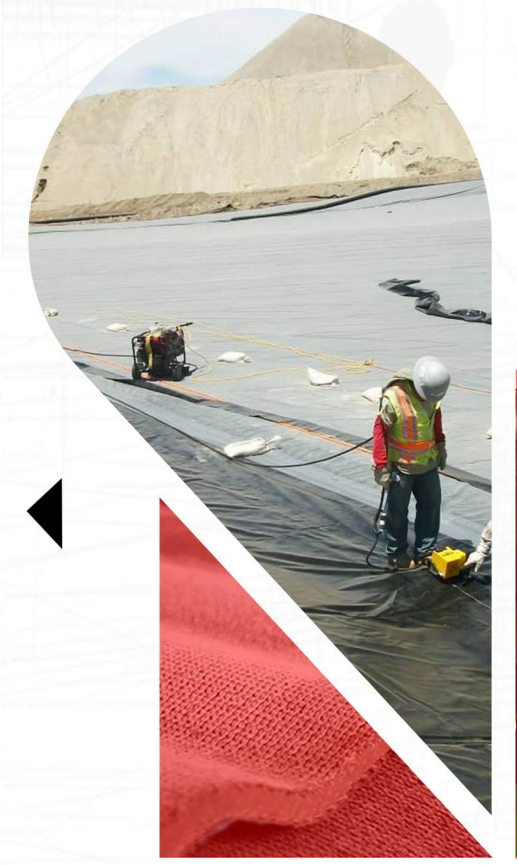


MARKETED & DISTRIBUTED IN GHANA BY:



- +233 54 010 3999
- +233 59 388 7555
- +233 54 010 3022

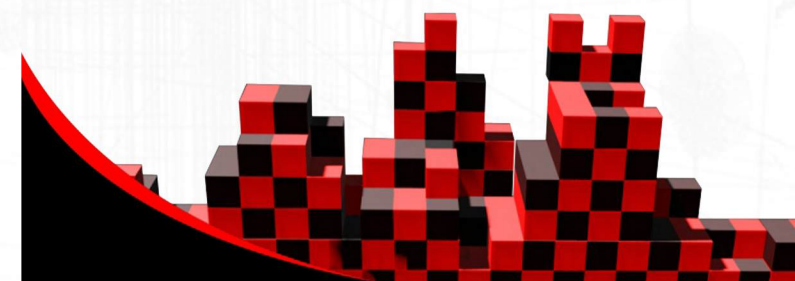
www.htcghana.com



# GEONOR

Geo Engineering & Waterproofing Materials

TESTED, PROVEN PRODUCT CRITICAL FOR LONG-TERM STRUCTURE PERFORMANCE

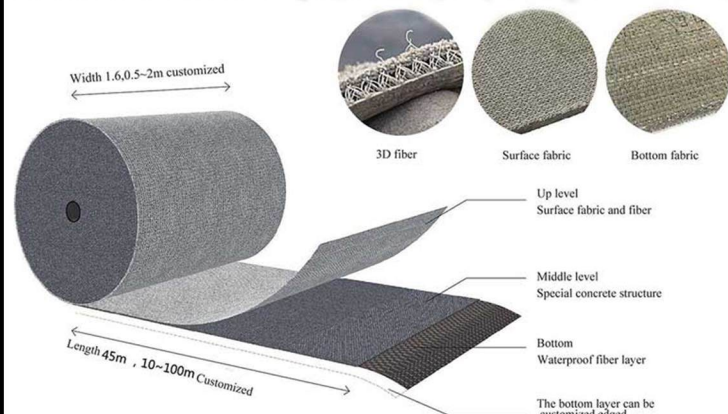
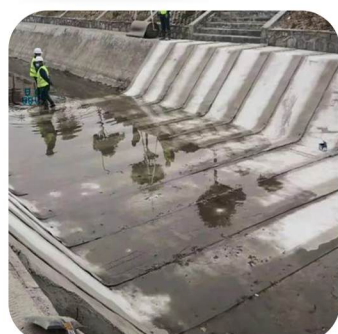


# 1. CEMENT BLANKET

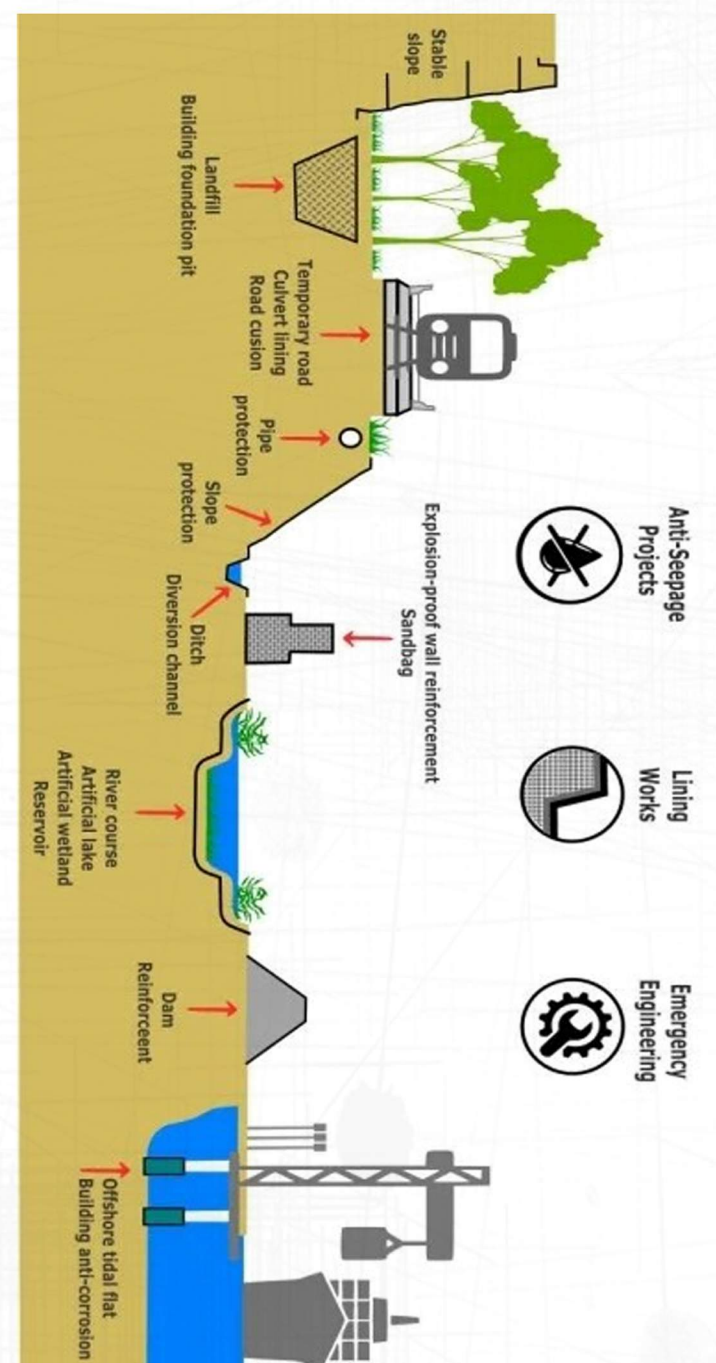


## APPLICATIONS

- STEEP SLOPE PROTECTION
- DITCH DIVERSION CHANNEL
- PIPELINE PROTECTION
- LANDFILL BUILDING PIT
- CULVERT LINING



## ROTATE TO VIEW DIAGRAM



# 2. GEOTEXTILE

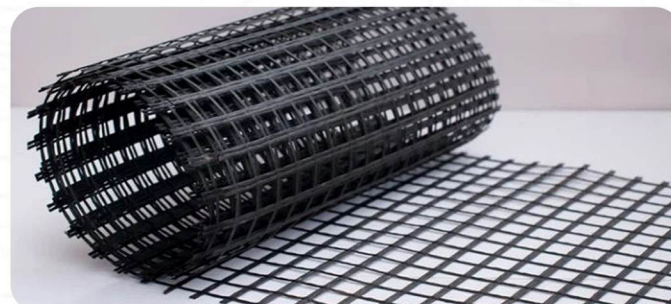


## APPLICATIONS

- FILTRATION
- EROSION CONTROL
- DRAINAGE IMPROVEMENT
- SOFT BASE REINFORCEMENT

# 3. GEOGRID

## FIBERGLASS GEOGRID



## APPLICATIONS

- SOIL STABILIZATION
- FOUNDATION REINFORCEMENT
- PAVEMENT BASE REINFORCEMENT
- REINFORCEMENT OF ROADS & HIGHWAYS

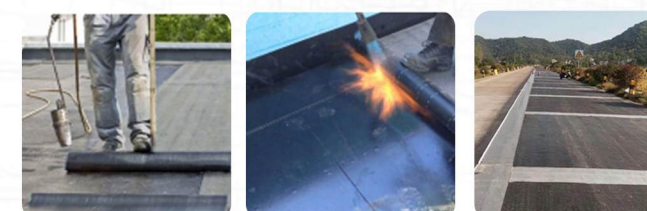
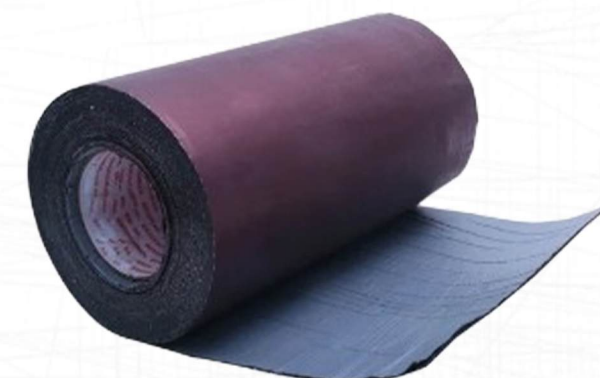
# 4. GEOCELL



## APPLICATIONS

- LOAD SUPPORT
- SLOPE PROTECTION
- CHANNEL PROTECTION
- VEGETATED RETAINING WALLS

# 5. ANTI - CRACK STICKER

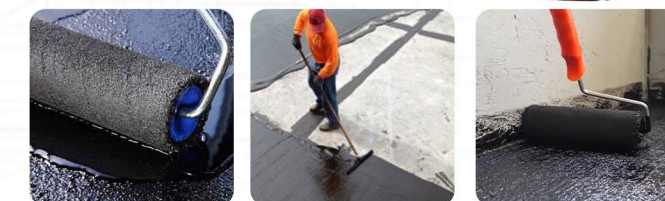


## APPLICATIONS

- PAVEMENT OVERLAY CRACK PREVENTION
- CRACK REDUCTION IN CONCRETE STRUCTURES
- PREVENTING CRACKS IN ROADS AND HIGHWAYS
- REINFORCING BRIDGE DECKS AND OVERPASSES

# 6. BITUMEN PRIMER

CONCRETE SURFACE TREATMENT AGENT



## APPLICATIONS

- Surface preparation for waterproofing.
- Damp-proofing for walls, floors, and roofs.
- Rust prevention on metal surfaces.
- Roofing applications for better membrane adhesion.
- Primer coat in road and highway construction.
- Coating pipelines for corrosion resistance.
- Sealant for cracks and joints.

# 7. BITUMEN MEMBRANE



## APPLICATIONS

- ROOF WATERPROOFING (FLAT AND SLOPED ROOFS).
- BASEMENTS AND FOUNDATIONS PROTECTION.
- WATERPROOFING BRIDGES AND TUNNELS.
- WET AREAS LIKE BATHROOMS AND SWIMMING POOLS.
- PARKING DECKS AND PODIUMS WATERPROOFING.
- UNDERGROUND STRUCTURES AND RETAINING WALLS.
- INDUSTRIAL AND COMMERCIAL WATERPROOFING.