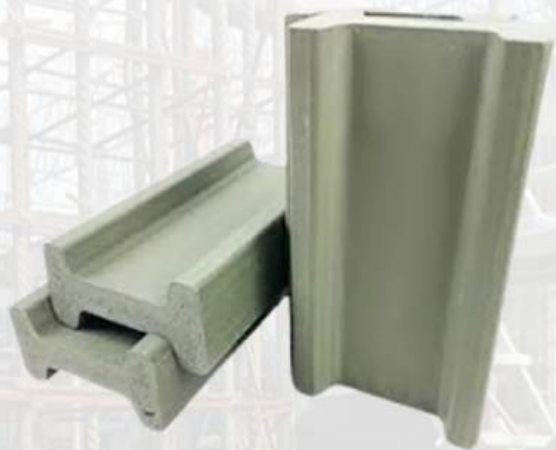


# PLASTIC BEAM



**MEGFIN**  
FORMWORK



MARKETED & DISTRIBUTED  
IN GHANA BY :

## Certificate of Analysis

Product Information		Product Name	PLASTIC BEAM	Manufacturing Techniq	Extrusion Process	Sampling	Inspectio	5 pcs	Remark
		Size (mm)	50*90*5800mm	/	/	/	/	/	
Test Items	Items	Standard Values	Test Values	Testing Result		GB/T2411-2008 GB/T1043.1-2008 GB/T19341-2008 GB/T1633-2000 JG/T418-2013 GB/T1034-2008			
	Size (mm)	50*90mm ±2mm	50*90mm	Qualified					
	Length (mm)	5800mm ±10mm	5800mm						
	GSM (kg/m)	2.5 ± 0.15	2.5						
	Color	Gray	Gray						
	Shore Hardness (HD)	≥58	70						
	Impact Strength (KJ/m <sup>2</sup> )	≥30	44(C)						
	Bending Streight (Mpa)	≥30	40						
	Vika Softening Point (°C)	≥80°C	80°C						
	Rate of Change in Heating Dimension (%)	±0.2%	-0.10%						
Water Absorption (%)	≤0.5%	0.30%							
Other Performance	Appearance	Bright and Clean							

**HTC**  
*Your best choice. We care...*

+233 54 010 3999  
+233 54 010 3011  
+233 54 010 3022

[www.htcghana.com](http://www.htcghana.com)

**THE SKELETON OF SUCCESS:  
RELIABLE FORMWORK**

[www.weisserbar.com](http://www.weisserbar.com)

# PLASTIC BOARD FORMWORK



## PRODUCT SUPERIORITY

1. Save 1/3 cost than other formwork.
2. Reusable 60-100 times.
3. No need brushing release.
4. Lightweight, High strength, waterproof and impact resistance

## SPECIFICATION

DIEMENSION (mm)	THICKNESS (mm)	WEIGHT (kgs/pc)
1220 x 2440	12	21.5
1220 x 2440	15	24.5
1220 x 2440	18	28.3
1220 x 2440	20	33.4
Other sizes can be customised		

## MECHANICAL PROPERTIES

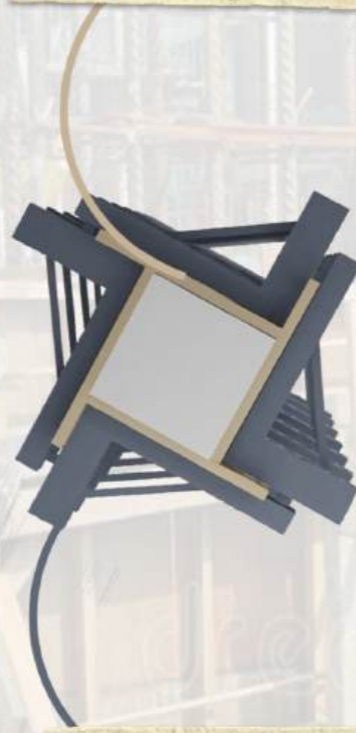
Tensile Strength	ASTM D-638	10mm/ min	MPa
Elongation at break	ASTM D-638	10mm/min	%
Bending Strength	ASTM D-790	2mm/ min	MPa

## PHYSICAL PROPERTIES

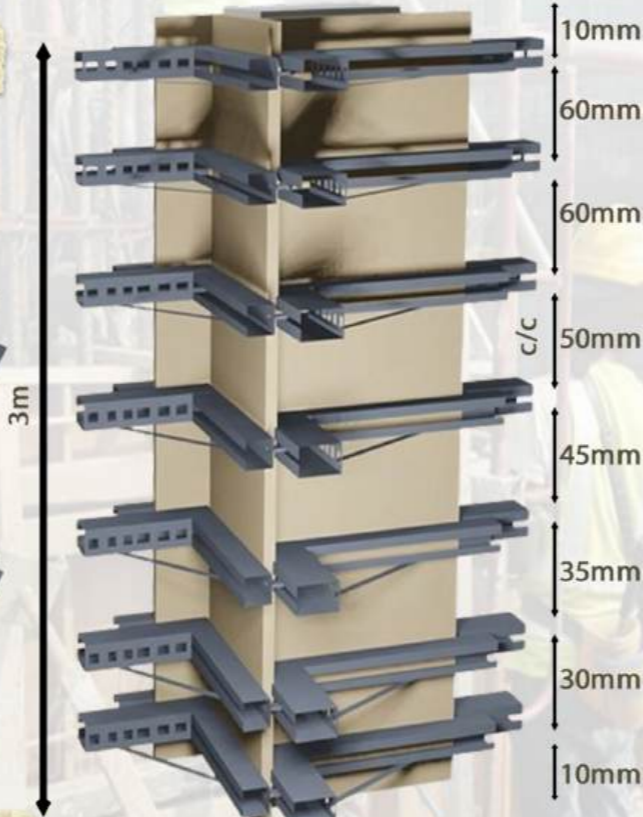
PROPERTIES	ASTM	TEST CONDITION	UNITS TYPICAL	VALUE
Density	ASTM D-792	23 ± 0.5OC	g/ cm <sup>3</sup>	1.005
Molding Shrinkage	ASTM D-955	3.2 mm	%	1.7
Melting Flowing Rate	ASTM D-238	230 OC, 2.16kg	g/ 10min	3.5

# SUPER ADJUSTABLE COLUMN MOULD

4 x (18mm Plastic Board (300cm x 50cm))



28 - Adjustable Column Moulds



## ADJUSTABLE VARIATIONS

15cm; 20cm; 25cm; 30cm;  
30cm; 35cm; 40cm; 45cm

## PRODUCT SUPERIORITY

- Easy to install. ( within 10 min )
- Two molds a day.
- Saving on plastering and skimming.
- Highly durable. ( over 100 times reuse )
- 28 adjustable brackets.

# ADJUSTABLE COLUMN MOULD



## INCLUDED

### MODEL 1 SET

- 4 Panels
- 29 Yellow locks
- 2 Iron rods
- 4 Iron locks

### ADJUSTMENTS

15cm; 25cm; 35cm;  
45cm; 55cm; 65cm

### MODEL 2 SET

- 4 Panels
- 29 Yellow locks
- 2 Iron rods
- 4 Iron locks

### ADJUSTMENTS

20cm; 30cm; 40cm;  
50cm; 60cm;

(20X20)CM TO (60X60)CM  
THE STANDARD HEIGHT IS 60 CM

